

E0264 | FOLDING STAIRWAY



Folding stairway 3 steps variant in action

FEATURES

- * Carbon steel hot galvanized
- * Balanced by spring cylinder (pressure springs)
- * Handrails
- * Divided step for safety
- * Hot galvanized, anti-skid steps
- * Contact bracket, covered with an oil-resistant rubber bumper
- * Guide arms
- * Maintenance-free bearing
- * Supporting frame
- * Arresting device
- * Immediately after mounting, the folding stairway will be operational
- * Test certificate No. 00056 of "German Health and Safety Executive Technical Committee"

SAFETY

Folding stairways are normally used to bridge the distance from loading racks to tank cars or rail tankers. They however can also be used for similar applications. Folding stairways have to fulfill high safety requirements.

The EMCO folding stairway E0264 fulfils the highest safety requirements.

The "German Health and Safety Executive Technical Committee" has approved the EMCO folding stairway E0264. This authority has awarded the EMCO folding stairway E0264 with the test certificate:

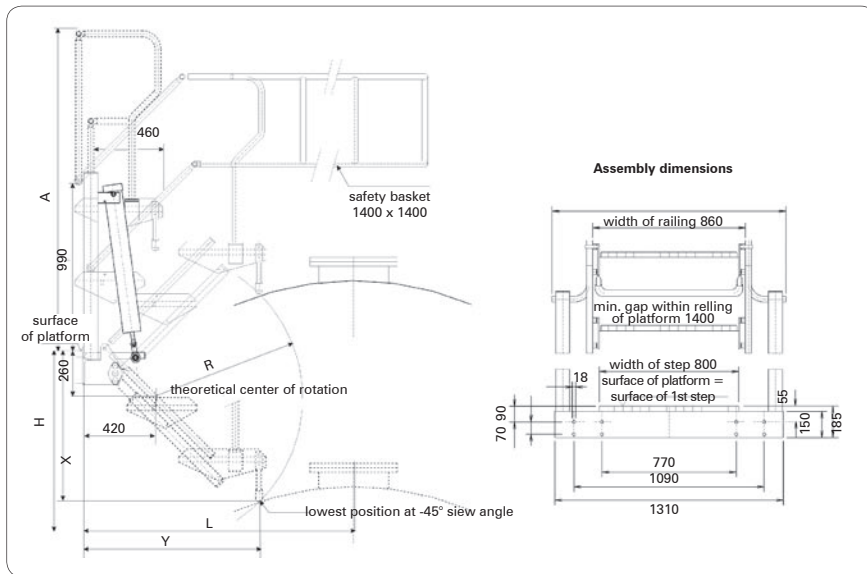
00056 for folding stairways (3 - 5 steps) without safety basket

The above mentioned authority requests from the user proper installation of the folding stairway as well as proper operation and maintenance.

Local regulations should apply. It is the buyer's responsibility to assure that the structure is suitable for this equipment.

E0264

E0264 | FOLDING STAIRWAY

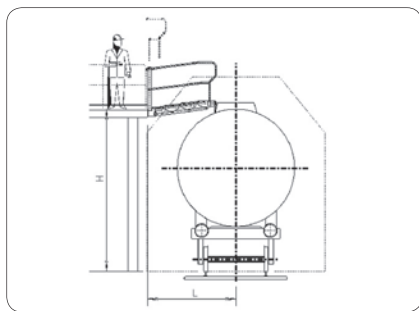


ACCESSORIES

- Limit switch for indication of parking position
- * Tracking device to allow alternative safety access positions along the loading platform
- * Warning panel red/white
- * Pneumatic or hydraulic operation
- * Safety basket integrated with folding stairway or as separate item

DIMENSIONS AND TECHNICAL DATA

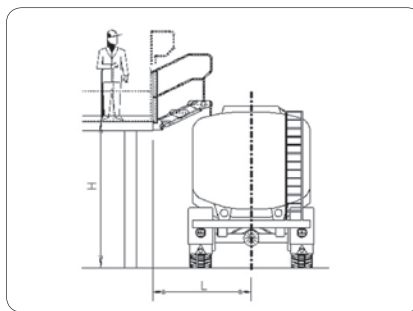
	A	R	X	Y	Safety basket	Bending moment on platform	Weight
3 steps	1845	840	853	1009	without	2800 Nm	185 kg
3 steps	1845	840	853	1009	with	3200 Nm	210 kg
4 steps	2265	1260	1150	1306	without	4800 Nm	210 kg
4 steps	2265	1260	1150	1306	with	5300 Nm	235 kg
5 steps	2685	1680	1447	1603	without	7400 Nm	260 kg
5 steps	2685	1680	1447	1603	with	8000 Nm	285 kg



RAIL CAR LOADING

	L	H
3 steps	2200*	3400
4 steps	2600	to 4200

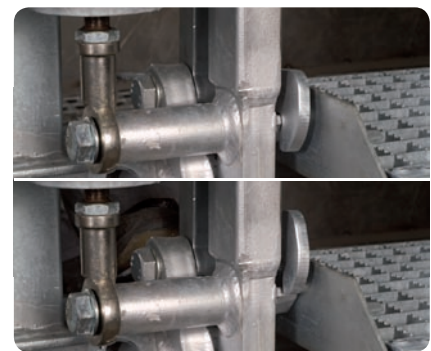
*For low racks, clearance gauge to be considered



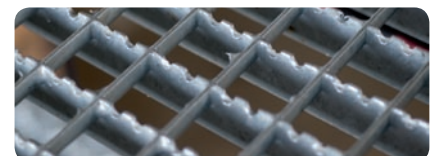
TANK TRUCK LOADING

	L	H
3 steps	1650*	2800
4 steps	2150	to 3400

*Recommendation: provision of a kerb



| Lock/unlock device



| Anti-skid steps

EMCOWHEATON

A Gardner Denver Product

EMCO WHEATON GmbH
 Emcostraße 2-4 · 35274 Kirchhain · Germany
 Phone +49 6422 84-0 · Fax +49 6422 5100
 www.emcowheaton.com · assist@emcowheaton.com

Better by Design

